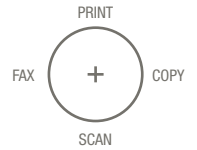




KONICA MINOLTA

### AN ALL-AROUND PLAYER WITH STAR QUALITY.

Fast, simple, reliable and secure. That's what your business workflow should be. So bizhub™ 360 gets the job done for high-volume and mid-volume document throughput with speed, quality and workhorse productivity. But it's also a bizhub – which means it does more. Prints and copies with higher quality and easier control. Moves information more easily in more directions, with Box Function convenience and enhanced data protection. Networks and communicates throughout your organization, seamlessly and securely. And puts you at the hub of your input, output, management and control – to work competitively and cost-effectively.



DO BUSINESS BETTER

36 PPM

CONNECT

COMMUNICATE

CONTROL

## bizhub 360

- ▶ FAST, EFFICIENT 36 PPM B&W OUTPUT
- ▶ ROBUST 150,000 PAGE MONTHLY DUTY CYCLE
- ▶ BIZHUB OP FOR MULTIFUNCTIONAL PRODUCTIVITY
- ▶ SIMITRI® POLYMERIZED TONER FOR MORE FINE DETAIL
- ▶ RAPID SCANNING – UP TO 70 ORIGINALS PER MINUTE
- ▶ PUSH SCANNING TO MULTIPLE DESTINATIONS
- ▶ SCAN-TO-EMAIL, HDD, FTP, PC (SMB)
- ▶ BOX FUNCTION WITH PASSWORD PROTECTION
- ▶ SIMPLE OPERATION, TILTING CONTROL PANEL



### bizhub 360

- PRINT
- COPIER
- SCANNER
- FAX



The essentials of imaging

# KONICA MINOLTA bizhub 360

**Workhorse 36 ppm print/copy output.** The bizhub 360 keeps pace with the busiest B&W traffic demands – so it's an ideal in-house delivery system for human resource documents, legal and healthcare reports, corporate presentations, financial data, training programs and more.

**Robust design for higher productivity.** When volume is high, you need power you can count on – and the bizhub 360 is ruggedly built for a robust monthly duty cycle of up to 150,000 pages.

**Simple operation, superior copies.** With greater ease-of-use for both full-time and first-time operators, the bizhub 360 reduces those long lines at the copier – and provides special features like 1200 dpi equivalent copy and print resolution to make every document look more professional.

**IC-204 Print Controller option** driven by the Emperon™ Print System, for powerful control of PCL 5e/PCL 6 and PostScript 3 emulation printing and finishing through a user-friendly interface.

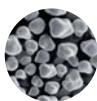
**User Box & security features.** You can store, share and access documents to individual user boxes with industry-leading functionality (Save/Print/Route/Move/Copy) – plus password protection, account track and security enhancements such as HDD Job Erase, HDD Sanitizing, HDD Lock function, Copy Protect, Secure Printing, IP Address Filtering, User Authentication, Scan Encryption, optional HDD Encryption (pending ISO 15408 Certification).\*

**All-in-one functionality with optional Super G3 Fax.** A simple fax option enables your bizhub 360 to handle all your traffic with seamless productivity – so you can eliminate redundant equipment. Plus, an optional second phone line for increased input/output capability.

**3-way tilting control panel.** Large function keys and simple touch-screen command interface provide comfortable, intuitive operation – and tilting design allows wheelchair access.

**SIMITRI® POLYMERIZED TONER.** THE EXCLUSIVE KONICA MINOLTA TONER FORMULATION WITH FINER PARTICLES TO SHARPEN EDGE DETAIL, MAKE TEXT MORE LEGIBLE AND INCREASE HALFTONE DEFINITION.

SIMITRI®



PULVERIZED



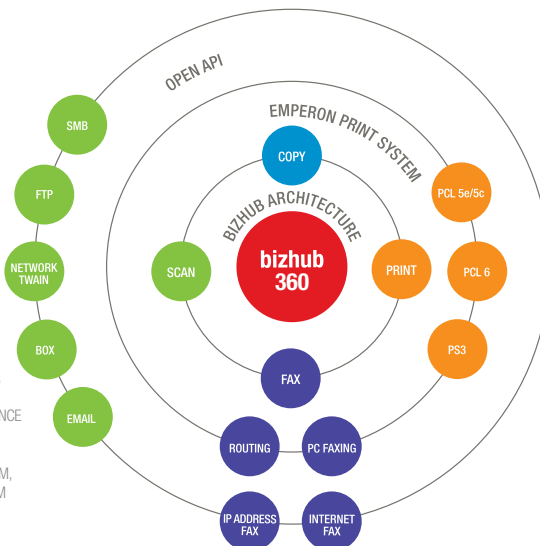
### FINISHING OPTIONS



- ▶ LEFT TOP STAPLING
- ▶ STAPLING (2-POSITION)
- ▶ 2/3-HOLE PUNCHING
- ▶ BOOKLET MAKING

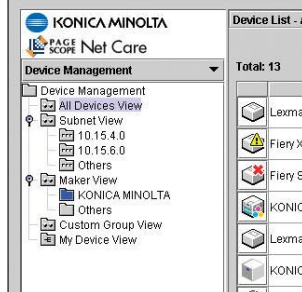
**PRODUCTION-QUALITY FINISHING OPTIONS.** PRINT IN-HOUSE AND ON-DEMAND, WITH MODULAR OPTIONS FOR 60-PAGE SADDLE-STITCH BOOKLET-MAKING, 50-SHEET STAPLING, AND 2/3-HOLE PUNCHING.\*

**THE POWER OF BIZHUB™ OP.** THREE ADVANTAGES IMPROVE MULTIFUNCTIONAL PERFORMANCE – BIZHUB ARCHITECTURE TO RUN ALL FUNCTIONS ON ONE CPU AND MEMORY SUBSYSTEM, THE EMPERON™ PRINT SYSTEM FOR INTEGRATED PRINT/SCAN OUTPUT WITH SIMPLE USER INTERFACE, AND BIZHUB OPEN API FOR CUSTOM INTEGRATION WITH FUTURE THIRD-PARTY SOFTWARE.



**36 PPM**

**5,650-SHEET MAXIMUM PAPER CAPACITY.** YOU CAN WORK LONGER WITHOUT RE-LOADING PAPER, LOAD UP TO 110 LB. INDEX STOCK FROM BYPASS AND COPY, SCAN OR DUPLEX ORIGINALS UP TO 11" X 17" IN SIZE.



**THE POWER OF PAGESCOPE™ SOFTWARE.** SPEED WORKFLOW THROUGHOUT YOUR ORGANIZATION WITH A TOTAL SUITE OF SOLUTIONS, INCLUDING PAGESCOPE WEB CONNECTION FOR DEVICE MANAGEMENT AND LDAP ADDRESSING, PAGESCOPE NET CARE FOR MANAGING MULTIPLE DEVICES FROM A SINGLE POINT, PAGESCOPE DATA ADMINISTRATOR™ FOR ENHANCED ADDRESSING AND SECURITY FUNCTIONS, AND PAGESCOPE WORKWARE™ FOR PERSONAL DOCUMENT MANAGEMENT.\*

**bizhub**



Office imagery courtesy of Knoll, Inc.

© 2007 KONICA MINOLTA BUSINESS SOLUTIONS U.S.A., INC. All rights reserved. Reproduction in whole or in part without written permission is prohibited. Konica Minolta and The essentials of imaging are trademarks of KONICA MINOLTA HOLDINGS, INC. bizhub, Emperon, and PageScope are trademarks of KONICA MINOLTA BUSINESS TECHNOLOGIES, INC. Simitri is a registered trademark of KONICA MINOLTA BUSINESS SOLUTIONS. All other brands and product names are registered trademarks or trademarks of their respective owners.

Design and specifications are subject to change without notice.

\* Some functions may require options, which may or may not be available at time of launch.



**KONICA MINOLTA**

KONICA MINOLTA BUSINESS SOLUTIONS U.S.A., INC.  
100 Williams Drive  
Ramsey, NJ 07446

[www.kmbs.konicaminolta.us](http://www.kmbs.konicaminolta.us)  
[www.kmbs.konicaminolta.us/solutions](http://www.kmbs.konicaminolta.us/solutions)